

NANOTTICA ABS



TREVOS
NANOTTICA ABS
✓ Resistance to ammonia
✓ Cleaning distance
DLG Test Report 7199

... ceiling height from 3.5 to 8 m, chemically resistant.

USE

The fixture boasts a low unified glare rating with UGR values thanks to its patented nanooptics. This ensures eye comfort, high visual performance and workplace safety, which indirectly translates into higher productivity.

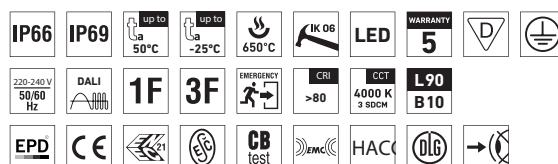
The fitting is highly recommended for illumination of premises where workers' visual precision is of paramount importance. These include workshops where fine assembly work is performed as well as craft workshops and visual inspection areas.

The fitting's standard beam angle makes it a great choice for premises with a fitting installation height of 3.5 to 8 m. In addition to indoor spaces, it is designed for agricultural buildings and other spaces with chemically aggressive environments due to ammonia fumes, lye fumes, alkali and hot water (hydrolysis). The fitting is primarily intended for large agricultural premises and industrial halls such as farms, stables, production plants and warehouses, car washes and laboratories with no explosion hazard. IP69-rated and HACCP-compliant, the fitting's design also makes it suitable for the food industry.

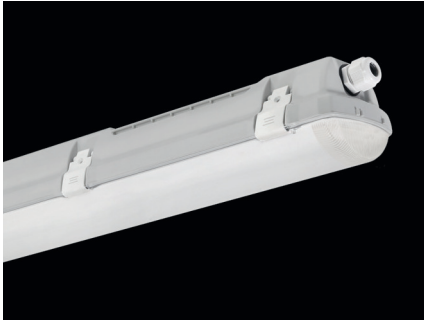
The fitting's base is made of ABS and diffuser of AC, resulting in their exceptional chemical resistance. Emissions in the environment of use may reduce the usability of the plastics; for more information see page 367.

ADVANTAGES

- Patented optics ensures absolute control over light beam distribution
- Low UGR ranging from 18,8 to 23,2
- Light fitting protection IP66 / IP69
- High temperature resistance in a range from $t_a = -25\text{ }^{\circ}\text{C}$ to $t_a = 50\text{ }^{\circ}\text{C}$
- Lifetime: 50 000 hours / L90B10
- High chemical resistance
- Variable suspension pitch, optional installation of light fitting even on an existing structure on which the original light fittings were suspended
- Optional throughwiring (up to 7 wires inside the light fitting)
- Standard model CRI > 80: 4000 K
- On request CRI > 80: 3000 K, 5000 K, 6500 K
- CRI > 90: 3000 K, 4000 K, 5000 K, 6500 K
- Optional delivery in dimmable version
- Certificates: EPD, ESc, ENEC, CB, DLG, HACCP



NANOTTICA ABS ABSc



TECHNICAL DESCRIPTION

- Light fitting protection: IP66 / IP69
- Maximum ambient temperature: $t_a = 50\text{ }^\circ\text{C}$
- Maximum ambient temperature: $t_a = 0-25\text{ }^\circ\text{C}$ for version with emergency back-up M1h, M3h
- Lifetime: 50 000 hours / L90B10
- Maximum light fitting efficiency: 155 lm/W
- UGR ranging from 18,8 to 23,2
- Optimum luminaire installation height from 3,5 to 8 m
- CRI > 80: 4000 K – standard
- CRI > 80: 3000 K, 5000 K, 6500 K - on request
- CRI > 90: 3000 K, 4000 K, 5000 K, 6500 K - on request
- MacAdam = 3 SDCM
- Diffuser: transparent AC with nanooptics (high chemical resistance, UV stability)
- Body: dark grey ABS (high chemical resistance, UV stability)
- Reflector: steel sheet, white colour (RAL 9003)
- Mounting clips: stainless steel, stainless steel hooks included
- Clips: polyamide + 15 % glass fibre or stainless steel + polyamide
- Sealing: polyurethane (PUR), foamed body groove
- Cable glands: screwed PG 13.5 (standard), or rubber (SBS)
- Terminal block: screwless, three-pole (basic version), or screwed
- The values stated for power consumption and luminous flux are in a tolerance of $\pm 7.5\%$

UGR EVALUATED FOR

X = 4 H, Y = 8 H S = 0.25 H

Reflectivity 70/50/20

NANOTTICA 1.5ft ABS

Type	Max. ambient temperature [°C]	Luminous flux of LED modules [lm]	Luminous flux of light fitting [lm]	Power consumption [W]	System efficacy [lm/W]	UGR Longitudinal/transverse	Net weight [kg]	A [mm]	D [mm]
Up to ambient temperature $t_a = 50\text{ }^\circ\text{C}$ - body dark grey ABS - diffusor with nanooptics (standard beam angle), transparent acrylate									
NANOTTICA 1.2ft ABS 1300/840	50	1310	1150	8,2	140	18.8 / 19.8	0,9	610	110 - 370
NANOTTICA 1.2ft ABS 1600/840	50	1560	1370	9,8	140	19.4 / 20.4	0,9	610	110 - 370
NANOTTICA 1.2ft ABS 2200/840	45	2140	1880	13,2	142	20.5 / 21.5	0,9	610	110 - 370
NANOTTICA 1.4ft ABS 2600/840	50	2600	2290	16,1	142	19.0 / 20.1	1,7	1170	700 - 960
NANOTTICA 1.4ft ABS 3200/840	50	3100	2730	19,1	143	19.6 / 20.7	1,7	1170	700 - 960
NANOTTICA 1.4ft ABS 4400/840	45	4300	3780	26,0	145	20.7 / 21.8	1,7	1170	700 - 960
NANOTTICA 1.4ft ABS 6400/840	45	6120	5390	36,1	149	22.0 / 23.1	1,7	1170	700 - 960
NANOTTICA 1.5ft ABS 3250/840	50	3240	2850	19,5	146	19.0 / 20.1	2,0	1450	970 - 1230
NANOTTICA 1.5ft ABS 4000/840	50	3850	3390	23,3	145	19.6 / 20.7	2,0	1450	970 - 1230
NANOTTICA 1.5ft ABS 5500/840	45	5340	4700	31,9	147	20.8 / 21.9	2,0	1450	970 - 1230
NANOTTICA 1.5ft ABS 8000/840	45	7780	6850	44,3	155	22.1 / 23.2	2,0	1450	970 - 1230

NANOTTICA ABS

Code	Type
100609	NANOTTICA 1.2ft ABS 1300/840
100610	NANOTTICA 1.2ft ABS 1600/840
100611	NANOTTICA 1.2ft ABS 2200/840
100612	NANOTTICA 1.4ft ABS 2600/840
100613	NANOTTICA 1.4ft ABS 3200/840
100614	NANOTTICA 1.4ft ABS 4400/840
100615	NANOTTICA 1.4ft ABS 6400/840
100616	NANOTTICA 1.5ft ABS 3250/840
100617	NANOTTICA 1.5ft ABS 4000/840
100618	NANOTTICA 1.5ft ABS 5500/840
100619	NANOTTICA 1.5ft ABS 8000/840

Non-dimmable driver - plastic clips

	1F	3F	M1h	M3h	3F M1h	3F M3h
100620	100631	x	x	x	x	x
100621	100632	x	x	x	x	x
100622	100633	x	x	x	x	x
100623	100634	100645	100653	100661	100669	
100624	100635	100646	100654	100662	100670	
100625	100636	100647	100655	100663	100671	
100626	100637	100648	100656	100664	100672	
100627	100638	100649	100657	100665	100673	
100628	100639	100650	100658	100666	100674	
100629	100640	100651	100659	100667	100675	
100630	100641	100652	100660	100668	100676	

NANOTTICA ABSc

Code	Type
100677	NANOTTICA 1.2ft ABSc 1300/840
100678	NANOTTICA 1.2ft ABSc 1600/840
100679	NANOTTICA 1.2ft ABSc 2200/840
100680	NANOTTICA 1.4ft ABSc 2600/840
100681	NANOTTICA 1.4ft ABSc 3200/840
100682	NANOTTICA 1.4ft ABSc 4400/840
100683	NANOTTICA 1.4ft ABSc 6400/840
100684	NANOTTICA 1.5ft ABSc 3250/840
100685	NANOTTICA 1.5ft ABSc 4000/840
100686	NANOTTICA 1.5ft ABSc 5500/840
100687	NANOTTICA 1.5ft ABSc 8000/840

Non-dimmable driver - stainless clips (c)

	1F	3F	M1h	M3h	3F M1h	3F M3h
100688	100699	x	x	x	x	x
100689	100700	x	x	x	x	x
100690	100701	x	x	x	x	x
100691	100702	100713	100721	100729	100737	
100692	100703	100714	100722	100730	100738	
100693	100704	100715	100723	100731	100739	
100694	100705	100716	100724	100732	100740	
100695	100706	100717	100725	100733	100741	
100696	100707	100718	100726	100734	100742	
100697	100708	100719	100727	100735	100743	
100698	100709	100720	100728	100736	100744	

NANOTTICA ABS DALI

Code	Type
100745	NANOTTICA 1.2ft ABS 1300/840 DALI
100746	NANOTTICA 1.2ft ABS 1600/840 DALI
100747	NANOTTICA 1.2ft ABS 2200/840 DALI
100748	NANOTTICA 1.4ft ABS 2600/840 DALI
100749	NANOTTICA 1.4ft ABS 3200/840 DALI
100750	NANOTTICA 1.4ft ABS 4400/840 DALI
100751	NANOTTICA 1.4ft ABS 6400/840 DALI
100752	NANOTTICA 1.5ft ABS 3250/840 DALI
100753	NANOTTICA 1.5ft ABS 4000/840 DALI
100754	NANOTTICA 1.5ft ABS 5500/840 DALI
100755	NANOTTICA 1.5ft ABS 8000/840 DALI

Digital dimmable driver DALI - plastic clips

	1F	3F	M1h	M3h	3F M1h	3F M3h
100756		x	x	x	x	x
100757		x	x	x	x	x
100758		x	x	x	x	x
100759		100770	100781	100789	100797	100805
100760		100771	100782	100790	100798	100806
100761		100772	100783	100791	100799	100807
100762		100773	100784	100792	100800	100808
100763		100774	100785	100793	100801	100809
100764		100775	100786	100794	100802	100810
100765		100776	100787	100795	100803	100811
100766		100777	100788	100796	100804	100812

NANOTTICA ABSc DALI

Code	Type
100813	NANOTTICA 1.2ft ABSc 1300/840 DALI
100814	NANOTTICA 1.2ft ABSc 1600/840 DALI
100815	NANOTTICA 1.2ft ABSc 2200/840 DALI
100816	NANOTTICA 1.4ft ABSc 2600/840 DALI
100817	NANOTTICA 1.4ft ABSc 3200/840 DALI
100818	NANOTTICA 1.4ft ABSc 4400/840 DALI
100819	NANOTTICA 1.4ft ABSc 6400/840 DALI
100820	NANOTTICA 1.5ft ABSc 3250/840 DALI
100821	NANOTTICA 1.5ft ABSc 4000/840 DALI
100822	NANOTTICA 1.5ft ABSc 5500/840 DALI
100823	NANOTTICA 1.5ft ABSc 8000/840 DALI

Digital dimmable driver DALI - stainless clips (c)

	1F	3F	M1h	M3h	3F M1h	3F M3h
100824		x	x	x	x	x
100825		x	x	x	x	x
100826		x	x	x	x	x
100827		100838	100849	100857	100865	100873
100828		100839	100850	100858	100866	100874
100829		100840	100851	100859	100867	100875
100830		100841	100852	100860	100868	100876
100831		100842	100853	100861	100869	100877
100832		100843	100854	100862	100870	100878
100833		100844	100855	100863	100871	100879
100834		100845	100856	100864	100872	100880

LEGEND

- 1F 1-phase 3 core through-wiring in the luminaire
- 3F 3-phase 5 core through-wiring in the luminaire
- M1h emergency back-up source with 1 hour operating time for maintained emergency illumination
- M3h emergency back-up source with 3 hour operating time for maintained emergency illumination
- 3F Mxh 3-phase 5 core through-wiring in the luminaire
(L3 used for emergency unit unswitched power supply)

- DALI version with digital dimmable driver DALI
- DALI 1F 1-phase 5 core through-wiring in the luminaire
- DALI 3F 3-phase 7 core through-wiring in the luminaire
- DALI 3F Mxh 3-phase 7 core through-wiring in the luminaire
(L3 used for emergency unit unswitched power supply)

LIGHT FITTING ATTACHMENT

- a) Directly to a ceiling or a wall with the use of screws and stainless brackets
- b) Suspension with the use of stainless hooks
- c) Attachment with the use of side hangers to the wall - is not included in accessories



VARIABLE INSTALLATION PITCH

NANOTTICA ABS



LIGHT FITTING DETAILED VIEW

NANOTTICA ABS

