

INNOVA NB ABS



BIM
ready



... chemically resistant, for areas with high ceilings of 8 – 12 m.

USE

Closed and non-dismountable light fitting according to the standard ČSN EN 60598-1 part 4 intended for chemically challenging or agricultural premises with incidence of vapours like ammonia, lye, alkaline compounds and hot water (hydrolysis). Thanks to the **Narrow Beam** optics, it is suitable for inside spaces with high ceilings, intended for suspension height from 8 to 12 m, e.g. **inside walls and corridors of high agricultural and industrial buildings, rack aisles in production and storage spaces, farms, stables and laboratories** without explosion hazard. The structural design of the light fitting (IP69) allows even placement in food-processing industry - HACCP.

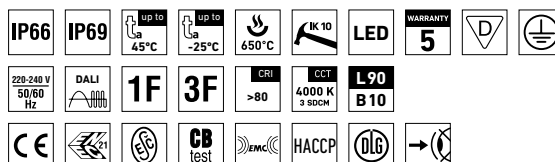
The light fitting resists dust, humidity and washing with spouting water up to 80 °C. The body and the diffuser made of ABS material have high chemical resistance.

An external terminal strip makes it easy and quick to connect the supply cable with no need to open the **fitting (PLUG and PLAY system)**.

Emissions in the environment of use may reduce the usability of the plastics; for more information see page 321.

ADVANTAGES

- Light fitting protection **IP66 / IP69**
- High temperature resistance in a range from $t_a = -25\text{ °C}$ to $t_a = 45\text{ °C}$
- Lifetime: 50 000 hours / L90B10
- High chemical resistance
- **Narrow Beam (NB)**, ceiling height 8 to 12 m
- **Variable suspension pitch**; optional installation of light fitting even on an existing structure on which the original light fittings were suspended
- Modernized stainless steel snap-in mounting clips – **easy attachment to a track lighting system with a width of 60 mm**
- **External terminal strip makes it easy to connect the supply cable – PLUG and PLAY system**
- Optional arrangement of light fittings in line without gaps
- **Fully automatic 100% control of functionality and tightness (leak test) during production**
- Easy cleaning and maintenance without need of replacing the light sources
- Eliminated risk of mechanical and electrostatic damage to LED chips
- Optional throughwiring (up to 5 wires inside the light fitting)
- Optional delivery in dimmable version
- Certificates: **ESĀ, ENEC, CB, DLG, HACCP**

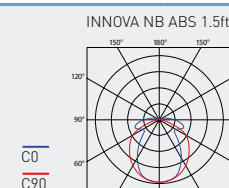
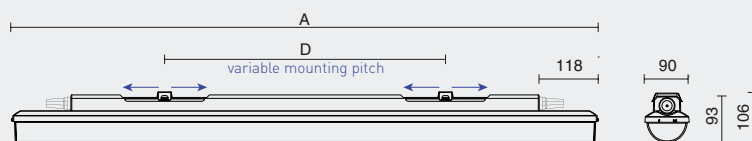


INNOVA NB ABS



TECHNICAL DESCRIPTION

- Light fitting protection: **IP66 / IP69**
- Maximum ambient temperature: **t_a = 45 °C**
- Lifetime: 50 000 hours / L90B10
- Maximum light fitting efficiency: 151 lm/W
- **CRI > 80: 4000 K** – standard
- CRI > 80: 3000 K, 5000 K, 6500 K - on request
- CRI > 90: 3000 K, 4000 K, 5000 K, 6500 K - on request
- MacAdam = 3 SDCM
- Diffuser: transparent ABS with Fresnel lenses, **Narrow Beam** (high chemical resistance, UV stability)
- Body: dark grey ABS (high chemical resistance, UV stability)
- Snap-in mounting clips: made of stainless steel and allowing **easy attachment to a track lighting system** with a width of 60 mm
- Ventilation membrane in the base eliminating vacuum and condensate build-up
- 3 or 5-pole **external terminal strip**, conductor cross-sectional area: 1.5 or 2.5 mm²
- Fittings may be **lined with zero distance** between them
- Optional constant luminous flux (CLO) in DALI version
- Electric equipment: LED modules, fixed output driver or DALI driver
- The package includes: stainless hooks and stainless brackets
- The values stated for power consumption and luminous flux are in a tolerance of ± 7,5 %



Type	Max. ambient temperature [°C]	Luminous flux of LED modules [lm]	Luminous flux of light fitting [lm]	Power consumption [W]	System efficacy [lm/W]	Net weight [kg]	A [mm]	D [mm]
Up to ambient temperature t _a = 45 °C - body: dark grey ABS - diffuser with Fresnel lenses, NB (Narrow Beam), transparent ABS								
INNOVA 1.4ft NB ABS 4400/840	45	4350	3830	27	142	1,5	1175	420 - 700
INNOVA 1.4ft NB ABS 6400/840	45	6260	5510	38	145	1,5	1175	420 - 700
INNOVA 1.5ft NB ABS 5500/840	45	5420	4770	33	145	1,8	1455	700 - 980
INNOVA 1.5ft NB ABS 8000/840	45	7740	6810	45	151	1,8	1455	700 - 980

INNOVA NB ABS

Diffuser with Fresnel lenses, Narrow Beam, transparent ABS

Type	1x3P	1x5P	DALI 1x5P	2x3P	2x5P	DALI 2x5P
INNOVA 1.4ft NB ABS 4400/840...	72511	72512	72513	72515	72516	72517
INNOVA 1.4ft NB ABS 6400/840...	72521	72522	72523	72525	72526	72527
INNOVA 1.5ft NB ABS 5500/840...	72531	72532	72533	72535	72536	72537
INNOVA 1.5ft NB ABS 8000/840...	72541	72542	72543	72545	72546	72547

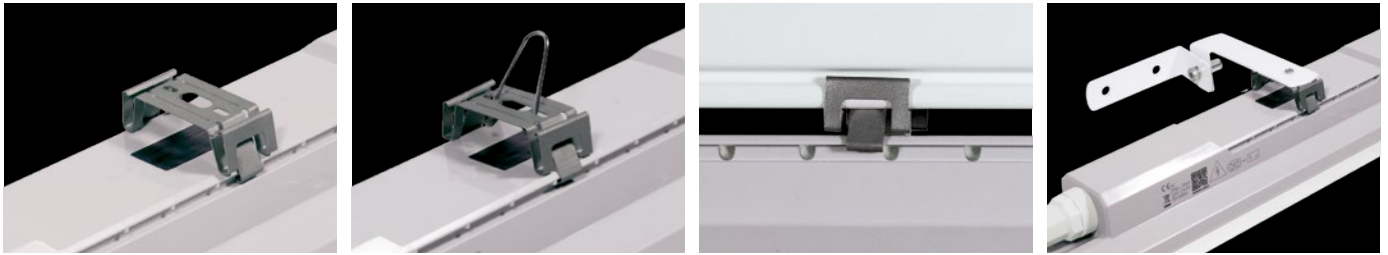
Example of type marking: 72523 = INNOVA 1.4ft NB ABS 6400/840 **DALI 1x5P**

LEGEND

- 1x3P** - a version featuring a non-dimmable ballast and a single 3-pole external terminal strip
- 1x5P** - a version featuring a non-dimmable ballast and a single 5-pole external terminal strip
- DALI 1x5P** - a version featuring a digitally dimmable ballast and a single 5-pole external terminal strip
- 2x3P** - a version featuring a non-dimmable ballast, two 3-pole external terminal strips and 3-wire connecting cables (1F), for continuous row installation
- 2x5P** - a version featuring a non-dimmable ballast, two 5-pole external terminal strips and 5-wire connecting cables (3F), for continuous row installation
- DALI 2x5P** - a version featuring a digitally dimmable ballast, two 5-pole external terminal strips and 5-wire connecting cables (DALI 1F), for continuous row installation

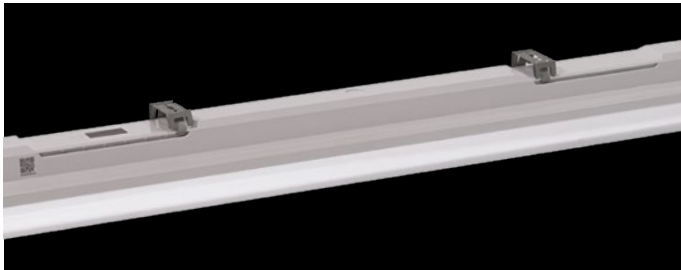
Light fitting attachment

- a) Directly to a ceiling or a wall with the use of screws and stainless brackets
- b) Suspension with the use of stainless hooks
- c) To be attached to a track lighting system with a width of 60 mm using stainless steel snap-in mounting clips
- d) Attachment with the use of side hangers to the wall

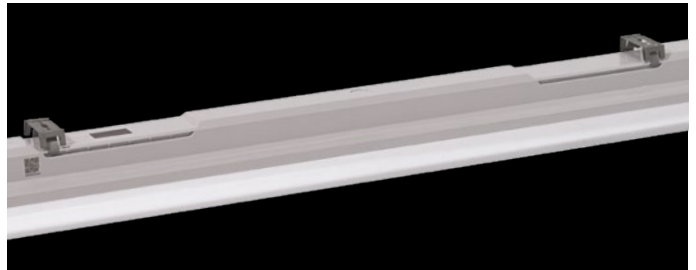


VARIABLE INSTALLATION PITCH

MINIMUM



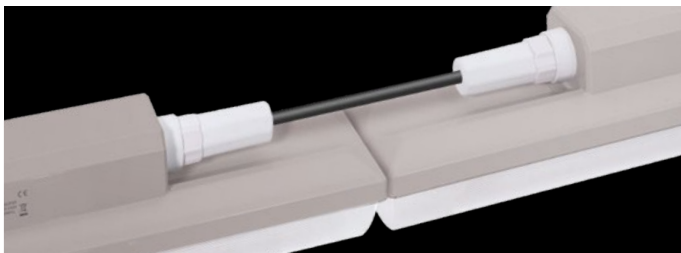
MAXIMUM



LIGHT FITTING INTERCONNECTION

An external terminal strip is used to ensure the supply cable can easily and quickly be connected with no need to open the light fixture (PLUG and PLAY system)

Interconnection of light fittings without spacing



LIGHT FITTING DETAILED VIEW

INNOVA NB ABS

